



**FALLS CHURCH**  
PRESBYTERIAN

# VISION OVERVIEW



## A LEGACY OF FAITH

As members of the Body of Christ, we are called not only to nurture our present community, but also plant seeds of hope and purpose for generations to come. Today, we stand at a moment of faithful opportunity — a chance to give a lasting gift to the future of our congregation and the community we are called to serve.

With the \$1 million proceeds from the sale of the Ives House — a treasured asset of our church's past — we now have the foundation to launch a Capital Campaign: a mission-driven effort to build a lasting capital fund that will sustain the long-term vitality of our ministries and extend our witness beyond our walls.

We are committed to honoring the faith of those who came before us by creating a foundation of stability, generosity, and vision for those who will follow. As we discern how best to steward these gifts, we are exploring a range of vehicles – from endowment structures to mission-aligned investments – to ensure your gifts are used wisely, faithfully, and for lasting impact.

## INVESTING IN THE FUTURE

Many of us remember when the Ives House was a vibrant extension of our church's ministry. Its legacy now becomes the seed of a new chapter. This campaign is not simply about preserving buildings or growing a fund. It's about strengthening our ability to respond to God's call — now and into the future. The Capital Fund will support three components:

**1. Complete extraordinary expenses and capital needs** that keep our facilities safe, welcoming, and equipped for ministry.

- Ensure structural integrity, update security systems, and maintain critical life-safety measures to protect everyone who enters our doors.
- Invest in renovations, necessary repairs, and upkeep that convey a spirit of hospitality and create inspiring spaces for worship, fellowship, and learning.
- Modernize technology, replace aging equipment, and enhance specific ministry areas.

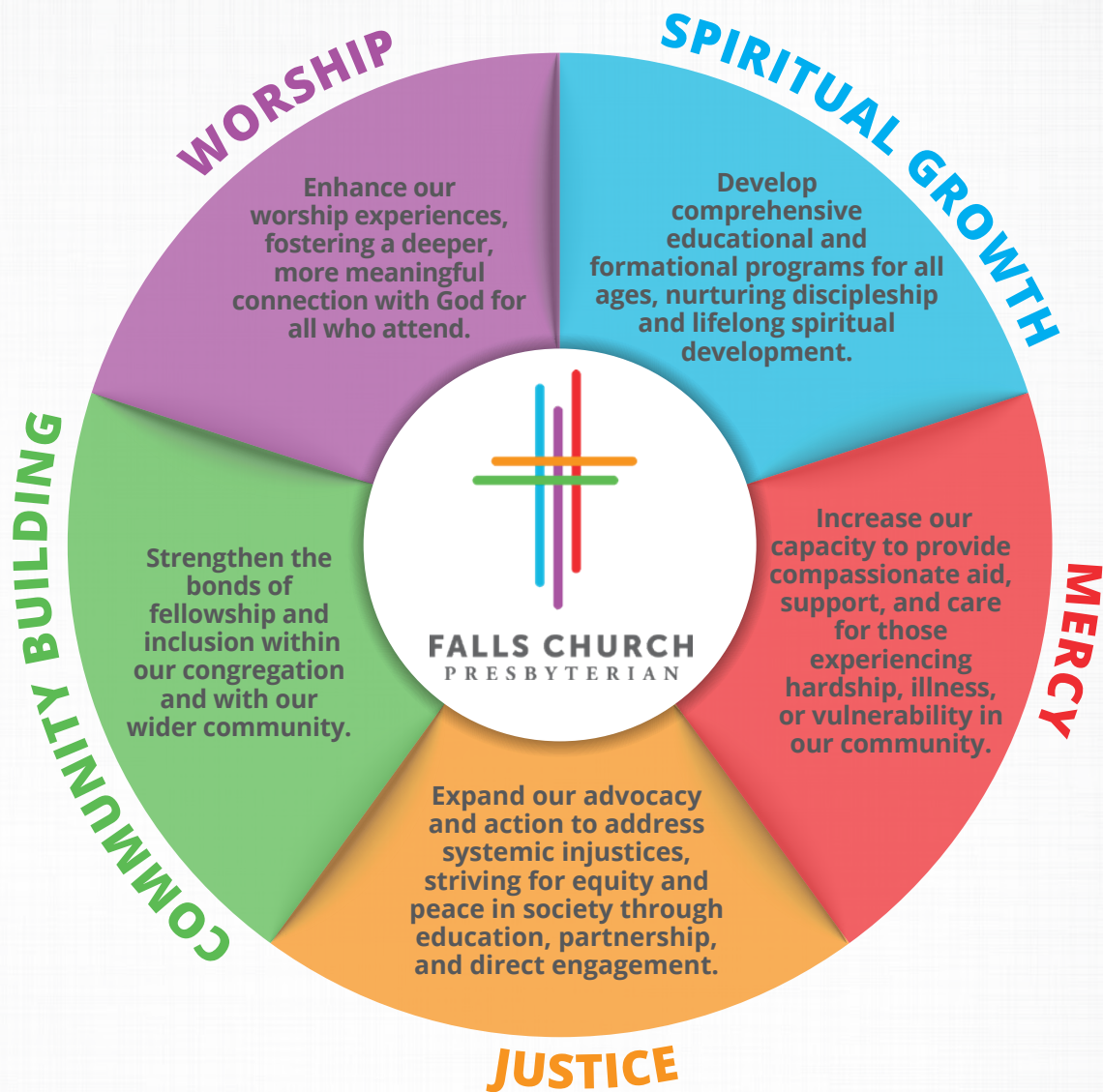
### Capital Priority Needs Include:

- ✓ Replace Pipes & HVAC Units
- ✓ Repair & Repaint Steeple
- ✓ Upgrade Elevator Cab & Controls
- ✓ Repair & Seal Parking Lot
- ✓ Replace Roofs (Shingle & Flat)
- ✓ Update Accessibility
- ✓ New Bathroom & Entrance Connection
- ✓ Upgrade Security
- ✓ Update Technology

Learn more about proposed projects (details and cost)  
at [www.fallschurchpresby.org/campaign](http://www.fallschurchpresby.org/campaign).



2. **Invest in our five core ministries** empowering them to serve faithfully both locally and globally, in keeping with our identity as a *Matthew 25 and Covenant Network* church.



3. **Grow capital reserves** to promote the long-term financial health and resilience of our congregation.

- Fund large-scale, necessary facility maintenance and improvements.
- Respond to unforeseen emergencies and unexpected major financial needs.
- Provide a stable financial foundation to sustain and grow our vital ministries and mission outreach.
- Secure a prosperous and enduring future for FCPC for generations to come.



# A JOURNEY OF HOPE AND POSSIBILITY

This is a journey we will continue to take together, rooted in prayerful discernment and guided by the Holy Spirit. It is an invitation for every member of the Falls Church Presbyterian family to consider how they might contribute to this lasting legacy. Your participation in the feasibility study—whether through prayer, completing the survey, and/or participating in an interview—is vital to shaping the final vision and ensuring that our Capital Campaign reflects the deepest hopes and commitments of our entire community.

## HOW WE GOT HERE: PROJECT TIMELINE

2025

**April** - CCTF Forms to Explore Campaign

**July** - Vision Established

**August** - Sold Ives House

**October** - Session Approves Kirby-Smith as Consultant

2026

**January**

Kick off Feasibility Study

**March**

Share Findings of Study

**April**

Kick Off Campaign\*

*\*Pending results of the feasibility study*

## FEASIBILITY STUDY - JOIN US!

As with any major initiative, the first step is to listen to our members and friends to gather comments and insight. It is through the feasibility study that a plan will be developed to articulate any capital initiative. Now is the time to give your feedback!



[fallschurchpresby.org/campaign](https://fallschurchpresby.org/campaign)



**PRAY FOR THIS PROCESS**



**COMPLETE THE SURVEY**



**SIGN UP FOR AN INTERVIEW**



**FALLS CHURCH**  
PRESBYTERIAN

225 East Broad Street • Falls Church, VA 22046  
P 703-532-6518 • F 703-532-6594 • [office@fallschurchpresby.org](mailto:office@fallschurchpresby.org)